

LESSON PLAN

GIRFEC Training Programme	Lesson Plan No. 8
Lesson Title: The Child's Plan – Bringing it all together	
Duration: 1.30 – 2.45	Trainers involved:
Aim: Staff will be confident in contributing to, developing and recording a Childs Plan (contd.)	
Outcomes: <ul style="list-style-type: none"> • Understand when a Child's Plan is needed • Understand the components that make up a Child's Plan • Be confident in the need for monitoring and reviewing the Child's Plan 	

Time	Content including teaching methods and key learning points to be covered	Training resources including audio visual aids, handouts and exercises
1.30	Tutor input/ group discussion <ul style="list-style-type: none"> • Highlighting single plan, proportionate, contents, 'living' process & document to support the agreed plan for a child. • Discuss procedure for reviewing a Childs Plan. • Meeting systems • Consider how to ensure a plan is integrated and the Child or Young Person is actively involved in the development/ review of their Plan. 	<ul style="list-style-type: none"> ▪ Power Point Presentation ▪ Childs Plan Guidance ▪ Flipchart

Session 8
Use & Contents of a
Child's Plan
Learning Outcomes

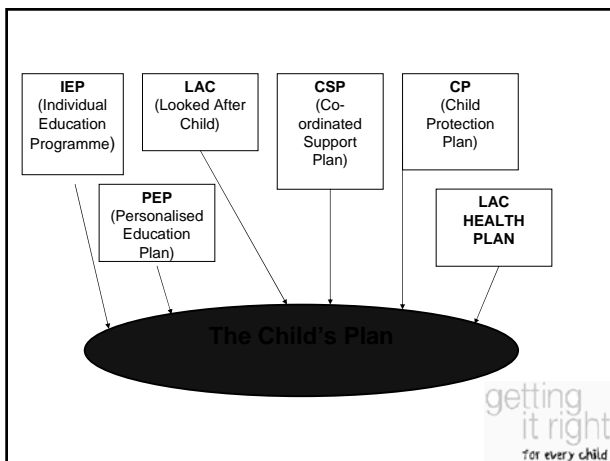
- Understand when a Child's Plan is needed
- Understand the components that make up a Child's Plan
- Be confident in the need for monitoring and reviewing the Child's Plan

getting
it right
for every child

Child's Plan

- Needed when two or more agencies **working together and are delivering a service**
- A Child's Plan needs to be constructed with child, family and other relevant people involved with the family.
- A Lead Professional is identified

getting
it right
for every child



getting
it right
for every child

A Child's Plan is

- An Assessment report
- A Record of agreed goals/actions
- A Review report/ record

Needs to be proportionate & constructed with child, family and relevant others

getting
it right
for every child

A Child's Plan will contain

- Demographic details
- Partners to the Plan
- Reasons for Plan/Report
- Chronology
- Assessment
- Analysis
- Summary of Needs
- Actions
- Child & Family's Views
- Review Arrangements

getting
it right
for every child

Monitoring & Review

- Meet statutory requirements
- Proportionate
- Actively agreed
- Not always a meeting

getting
it right
for every child

What if the plan isn't working?

Statutory plans

- Consider an early review

Non-Statutory plans

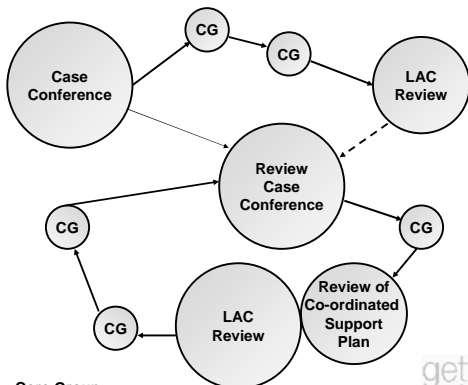
- Review the plan
- Consider convening a meeting

getting
it right
for every child

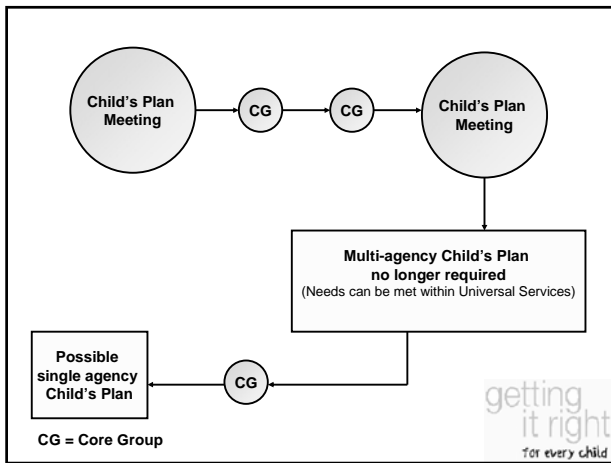
Discuss with the Integrated Services Officer if.....

- Initial assessment suggests targeted service
- Increasing complexity requires advice
- Concerns not reducing – 6 months
- A Lead Professional from a targeted agency is recommended
- Volume exceeds agency capacity to deliver the Plan
- Referral to the Children's Reporter should be considered

getting
it right
for every child



getting
it right
for every child



Overall Learning Outcomes for entire Training Course

Understand

- the overarching GIRFEC principles
- the importance of involving children & families
- the role & responsibilities of the Named Person
- the role & responsibilities of the Lead Professional
- the SHANARI well-being indicators
- the Assessment Framework & its use
- when a Child's Plan is required
- what the Child's Plan contains
- who is party to the Child's Plan
- monitoring & reviewing processes of a Child's Plan
- Information Sharing processes across agencies
- the risk assessment model in GIRFEC
- the Resilience Matrix & its use

Getting it right for every child **Programme 3 Core Training** **Day 2**

NAME OF PARTICIPANT: _____

DATE OF TRAINING: _____

Session 5 (Risk Assessment & Management in GIRFEC) Learning Outcomes

- Understand the impact of risks on children's development
- Understand the GIRFEC risk assessment model
- Understand how risk assessment relates to the assessment and planning process

Did Session 5 meet all the Learning Outcomes?

Not at all

Very little

In part

Completely

Please add any comment

Session 6 (Resilience Matrix) – Learning Outcomes

- Understand the importance of resilience and a protective environment
- Understand how the Resilience Matrix can be used to analyse strengths and pressures from the My World Triangle
- Use the analysis to inform planning

Did Session 6 meet all the Learning Outcomes?

Not at all	Very little	In part	Completely

Please add any comment

Session 7 (Use & Components of Child's Plan) – Learning Outcomes

- Understand when a Child's Plan is needed
- Understand the components that make up a Child's Plan
- Be confident in the need for monitoring and reviewing the Child's Plan

Did Session 7 meet all the Learning Outcomes?

Not at all	Very little	In part	Completely

Please add any comment

Session 8 (Constructing a Child's Plan) – Learning Outcomes

- Understand how to record information and construct a Child's Plan
- Be able to analyse information in a Child's Plan
- Be confident in developing actions based on the analysis to meet the identified needs

Did Session 8 meet all the Learning Outcomes?

Not at all	Very little	In part	Completely

Please add any comment

Overall Evaluation – Day 2

	Excellent	Good	OK	Poor	Very Poor
Organisation					
Speakers					
Pace					
Facilities					
Pre-event Org.					
Hand-outs					

Other Comments or Suggestions